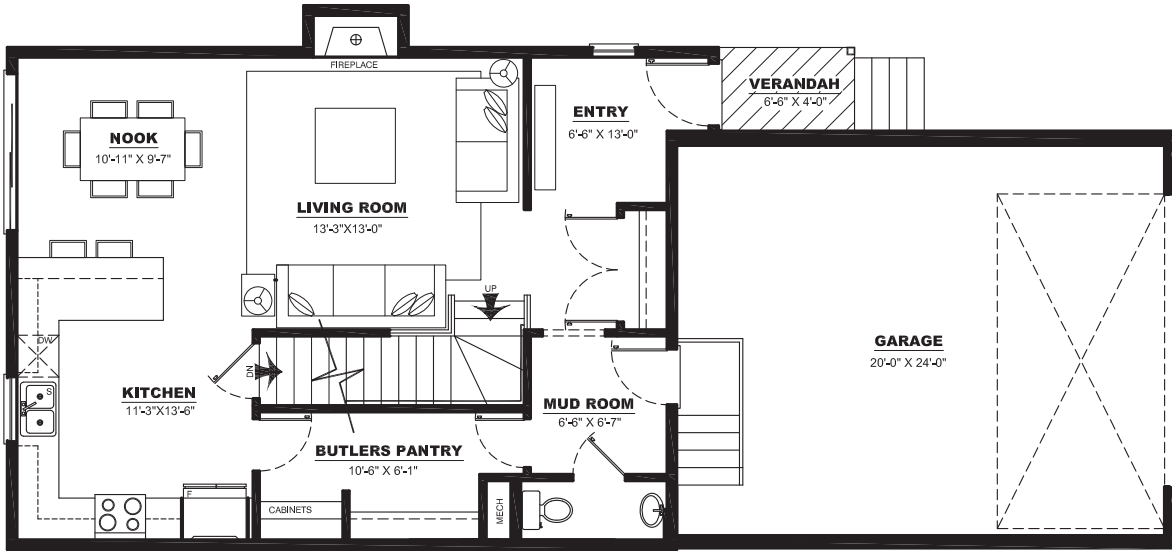
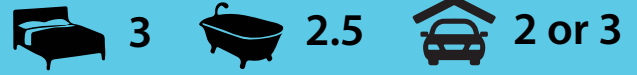
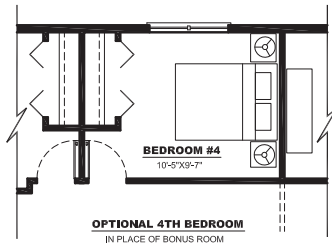


THE COLLINGWOOD

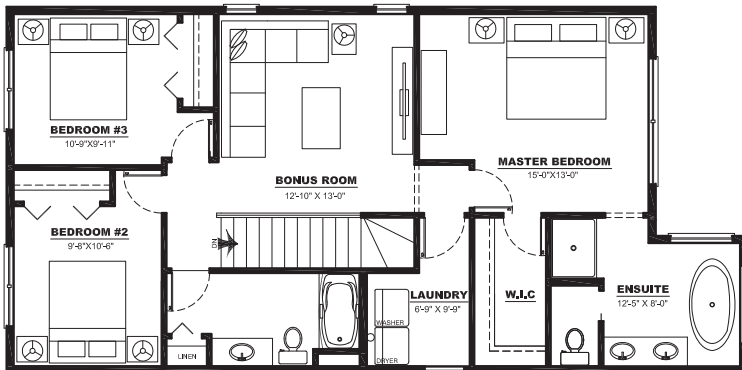
TWO STOREY | 1851 SQ. FT.



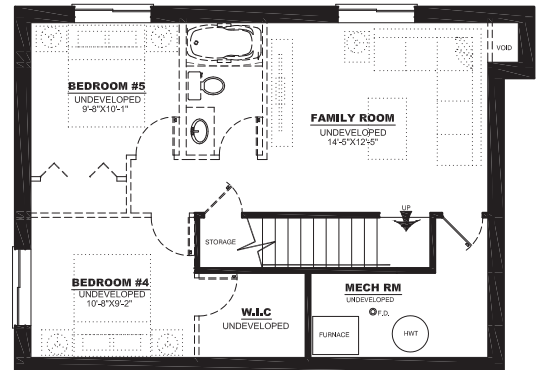
MAIN FLOOR PLAN: 777 SQ FT



OPTIONAL 4TH BEDROOM
IN PLACE OF BONUS ROOM



UPPER FLOOR PLAN: 1074 SQ FT



LOWER FLOOR PLAN: 599 SQ FT